

GREENFIRE™ INFUSION GF750

Experience the Peak of Realism, Innovation, and Quality with Regency's New Gas Insert





INFUSION BURNER

Featuring Our Latest Technology

Inspired by nature and fueled by innovation, Regency's new patent-pending infusion burner technology delivers an unparalleled realistic flame and log set. Homeowners can now truly enjoy the look and feel of a traditional wood fire at the touch of a button.

By reimagining what's possible, Regency designers have replicated the beauty of a real wood fire by infusing the burners into the log set, creating a natural burning log effect for the **most natural looking gas insert** available. Watch in awe as the flames dance effortlessly in the firebox creating a one-of-a-kind experience. Unmatched by any traditional burner, the Infusion Burner will elevate the standard for Gas Inserts.



GFi750 GAS INSERT

Regency's Most Advanced Gas Insert

Experience the most realistic gas fireplace insert available. The all-new GFi750 is designed to fit into more homes and provide a class-leading viewing area, so you **see more of what matters - the fire**. Our all-new patent-pending infusion burner technology creates a burning log look so realistic your guests will have a hard time telling whether it's wood or gas!

FEATURES

- NEW: innovative, patent-pending infusion burner with Australian hardwood logs
- 6 speed fan and remote control included
- Dual glass safety barrier for a clear view of the fire
- Ember bed lighting for a realistic glow
- Optional 3 piece glass inserts for enhanced style and realism

IMAGE ABOVE: GFi750 shown with regular faceplate, 3-sided backing plate with reflective glass inserts and Australian hardwood log set.



GFi750 DETAILS

INSERT OPTIONS



Painted Black
(included)



Reflective Black Glass
(optional extra)

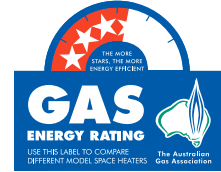
BACKING PLATE



3-sided Backing Plate

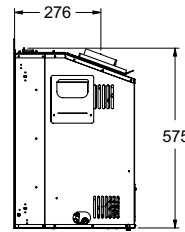
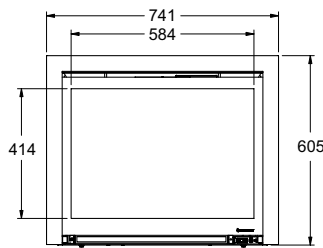
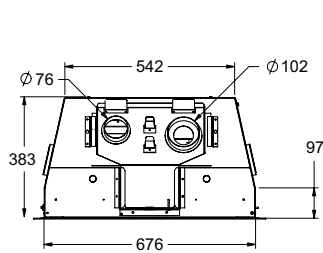
UNIT SPECIFICATIONS

NOMINAL MAXIMUM GAS CONSUMPTION			OUTPUT		
NG	PROPANE	ULPG	NG	PROPANE	UPLG
26 MJ/hr	26 MJ/hr	21.5 MJ/hr	5.1 kW	5.1 kW	4.5 kW

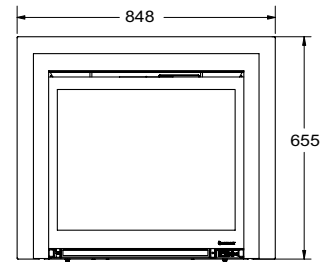


Note: Star rating is 3.3 on NG with intermittent pilot

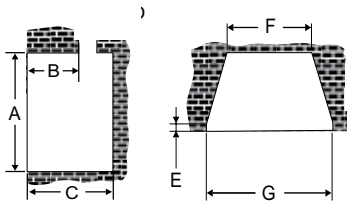
UNIT DIMENSIONS - FLUSH INSTALL (MM)



WITH BACKING PLATE (MM)



MINIMUM FIREPLACE DIMENSIONS (MM)



A - HEIGHT	B - MAX. LINTEL BAR DEPTH	C - DEPTH	E - FRONT DEPTH TO TAPER	F - WIDTH (REAR)	G - WIDTH (FRONT)
590	200	400	100	565	685

NOTE: All product specifications are subject to change without notice. Before installing refer to the relevant product manual for full and up to date information. Heating capabilities of units are affected by: drafts under doorways or through flooring, large glass areas not covered by heavy drapes, ceiling heights greater than 2.4m or cathedral type ceilings, poor or no insulation and geographical locations.

for your nearest dealer visit:

regency-fire.com.au

or call 1800 081 978

Fireplace Products Australia Pty Ltd.
99 Colemans Road,
Dandenong South, Vic, 3175
Phone: 1 800 081 978
Email: sales@regency-fire.com.au

Distributor NZ Aber Holdings Ltd
17 Mainstreet Place,
PO Box 10095, Te Rapa, Hamilton 3241
New Zealand
Phone: 64 7849 7585

Distributor WA Air Group Australia
28 Division St, Welshpool WA 6106
Australia
Phone: 08 9350 2200

DISCLAIMER: Appearance of flames varies with installation and fuel type. Star ratings vary based on flue type and configuration.

©2022 FPI Fireplace Products International Ltd. Regency® is the registered trademark of FPI Fireplace Products International Ltd. All rights reserved. (11/22)

Your Regency Dealer